



# LESSONS IN CONSERVATION

SERVING TO SAVE

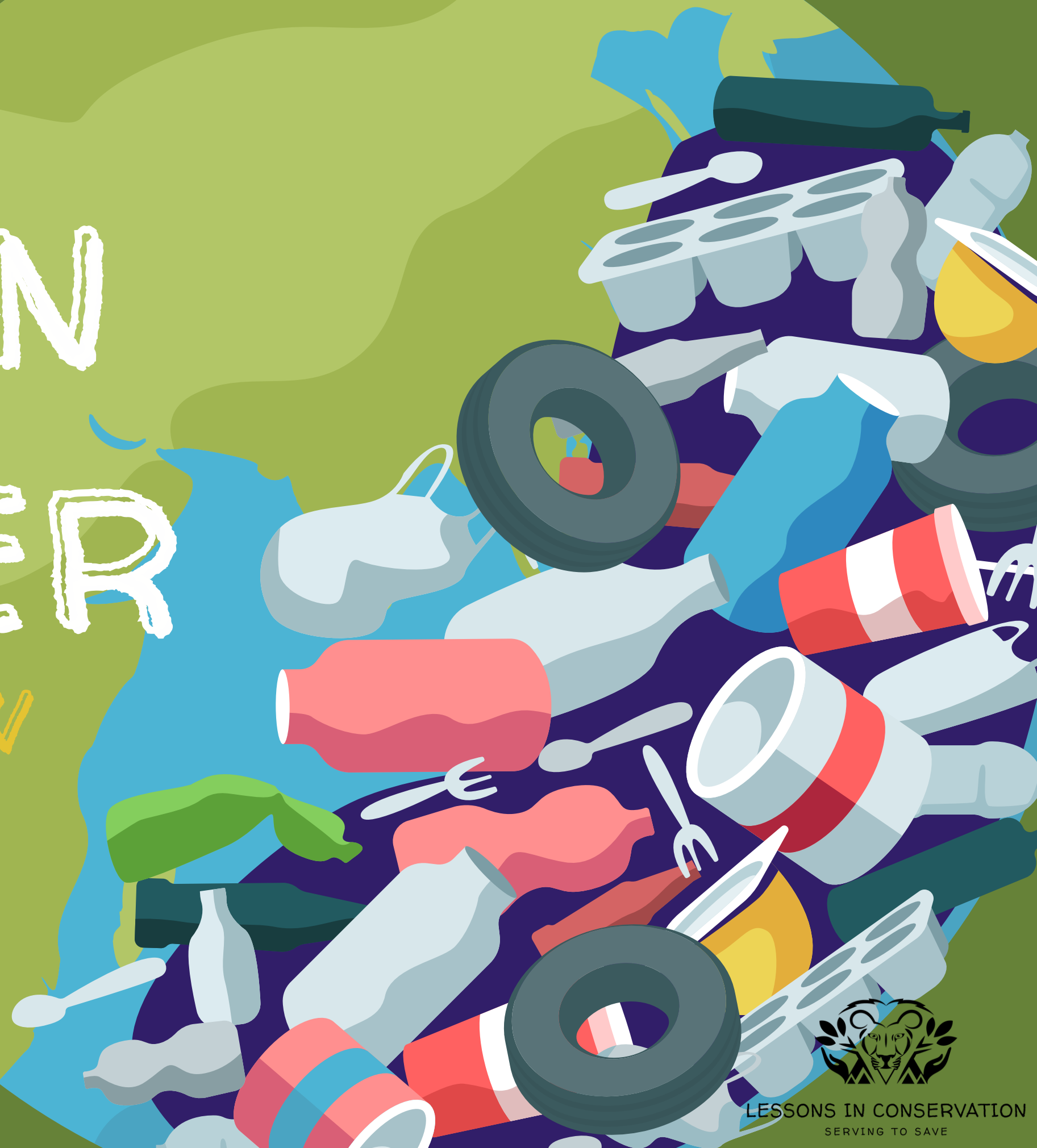
Gr 4- Lesson 9

Promise to protect the planet



# POLLUTION AND LITTER

WHAT IT IS AND HOW  
TO SOLVE IT



WHAT DOES POLLUTION  
AND LITTER MEAN TO YOU?



# POLLUTION

When humans put substances or materials into the environment that are harmful or poisonous to all living things.





# LITTER

Litter is when rubbish and trash is discarded where it is not meant to be.



# WHERE DO WE SEE MOST OF THE LITTER?

RIVERS



SCHOOL



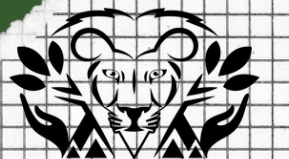
NEXT TO ROADS



BEACH



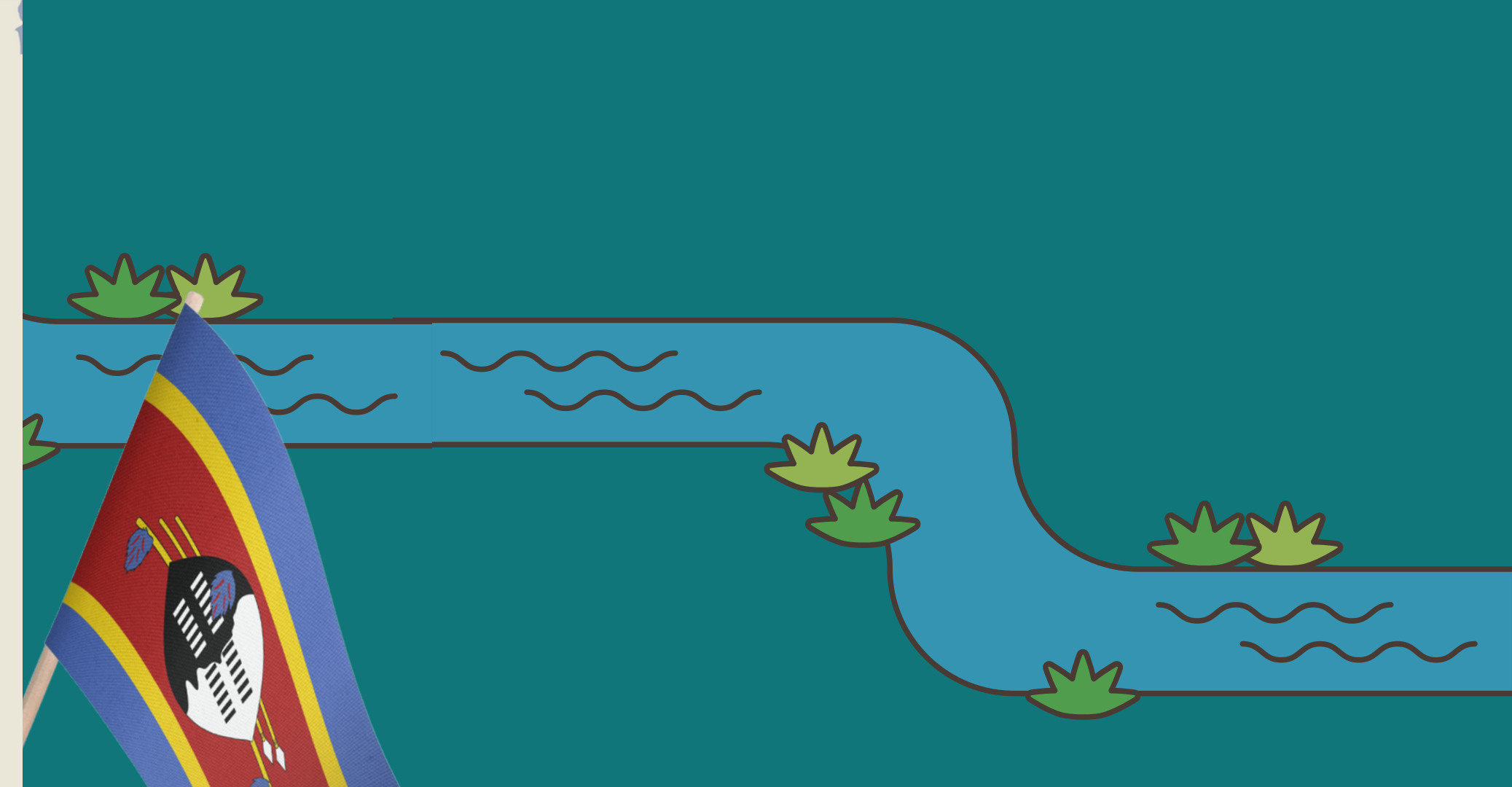
IN TOWN





LET'S WATCH A VIDEO





# RIVERS IN ESWATINI







# ESWATINI HAS 5 MAIN RIVER SYSTEMS



1. THE LOMATI
2. THE KOMATI
3. THE UMBULUZI
4. THE USUTU
5. THE NGWAVUMA



# WHY ARE RIVERS IMPORTANT?

Rivers provide us with many resources.



Rivers are a home for many animals



**DANGER**

OF

LITTERING



- Rivers become blocked
- Animals die
- Plants suffer
- Washes into the ocean
- Takes time to decompose
- Expensive to clean





LET'S DO AN

ACTIVITY



LESSONS IN CONSERVATION  
SERVING TO SAVE

# CIGARETTE BUTTS



# BANANA PEEL



# PLASTIC BAGS



# CIGARETTE BUTTS



5-30 YEARS

# BANANA PEEL



5 WEEKS

# PLASTIC BAGS



600 WEEKS



# ALUMINIUM CANS



# CAR TYRES



# ALUMINIUM CANS



200-500 YEARS

# CAR TYRES



1 MILLION YEARS





# JUST HOW BAD IS THE LITTER PROBLEM?



Great Pacific  
Garbage Patch



80 000 TONNES

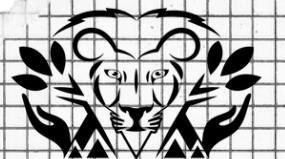


13 333  
ELEPHANTS





1.8 TRILLION PIECES =  
250 PIECES FOR EVERY HUMAN



# GREAT PACIFIC GARBAGE PATCH

1.6 MILLION  
SQUARE  
KILOMETERS  
=  
BIGGER THAN  
SOUTH AFRICA  
(1.22 MILLION  
SQUARE  
KILOMETERS)





LET'S WATCH A VIDEO



LESSONS IN CONSERVATION  
SERVING TO SAVE



IT'S TIME TO BE  
LITTER HERO'S!!!

# POST SURVEYS





# LESSONS IN CONSERVATION

SERVING TO SAVE